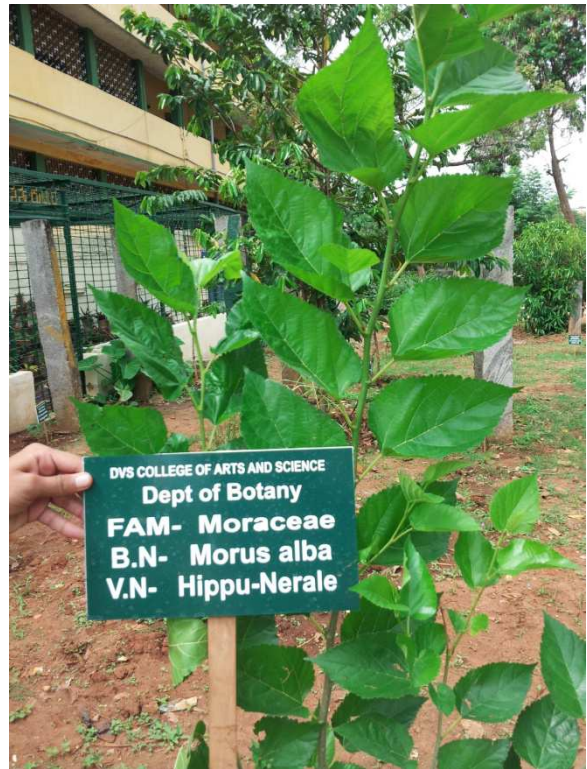


## Department of Botany

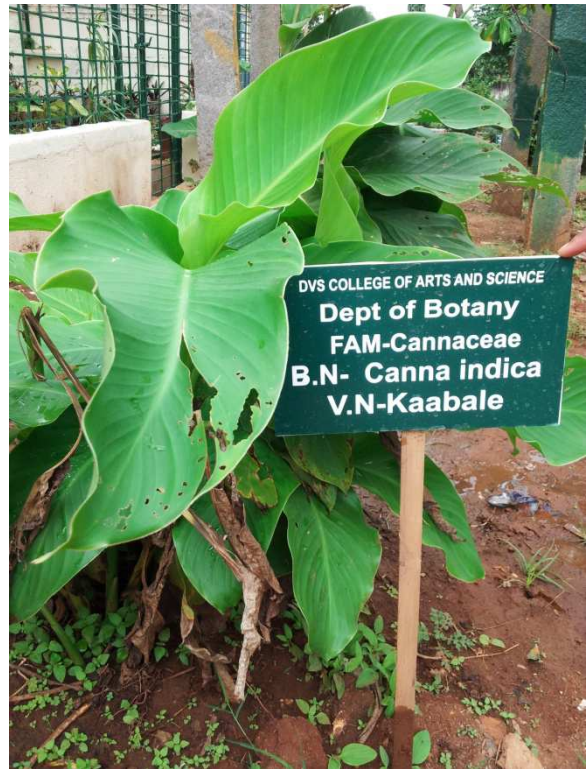
### List of Plants maintained at Botany Garden

Sl. No.	Plants	21	Hibiscus
1	Pistia	22	Jackfruit
2	Hydrilla	23	Terminalia cattappa
3	Eletrtaria cordamom	24	Pongamia pinnata
4	Curcuma aromatica	25	Phyllanthus emblica
5	Aloe vera	26	Justicia adathoda
6	Tradescantia pallida	27	Saraca ashoka
7	Annona reticulata	28	Vitex negundo
8	Tradescantia spathacea	29	Catheranthus roses
9	Cymbopoghma citratus	30	Xanthophyllum alatum
10	Callisia fragrans	31	Psidium guajava
11	Piper nigram	32	Myristica fragrans
12	Tinospora cardifolia		
13	Dracaena fragrans		
14	Dracaena trifasciata		
15	Colocasia sps		
16	Kentia palm		
17	Cycas revoluta		
18	Mulberry		
19	Azadirachta indica		
20	Morinda citrifolia		
21	Hibiscus		
22	Jackfruit		
23	Terminalia cattappa		

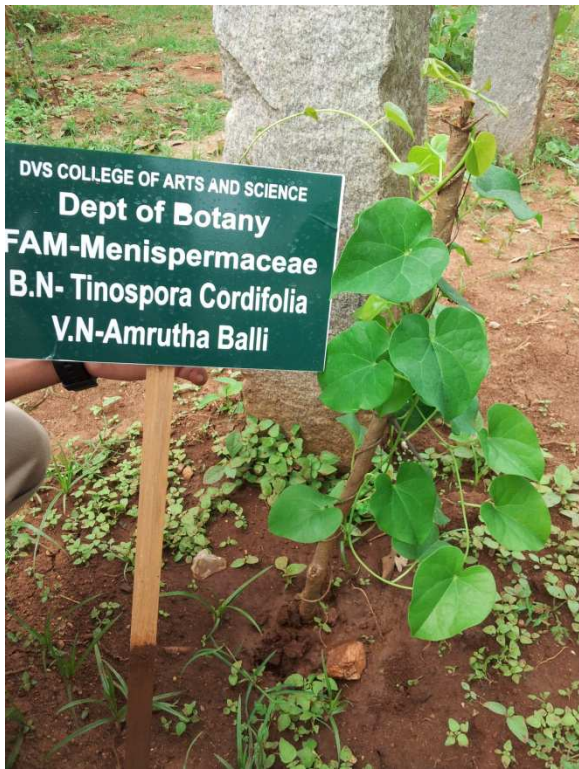
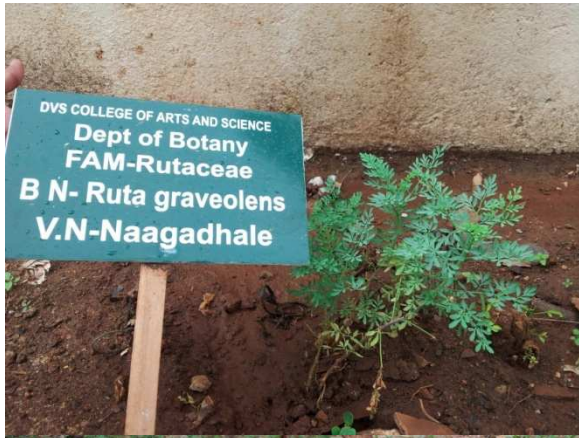
Botanical Garden



  
Principal  
D.V.S. College of Arts & Science  
Shimoga.



*M. V. S.*  
Principal  
D.V.S. College of Arts & Science  
Shimoga.



  
Principal  
D.V.S. College of Arts & Science  
Shimoga.



M. V. S.

Principal  
D.V.S. College of Arts & Science  
Shimoga.



M. V. S.

Principal  
D.V.S. College of Arts & Science  
Shimoga.



  
Principal  
D.V.S. College of Arts & Science  
Shimoga.



*M. V. ...*  
Principal  
D.V.S. College of Arts & Science  
Shimoga.



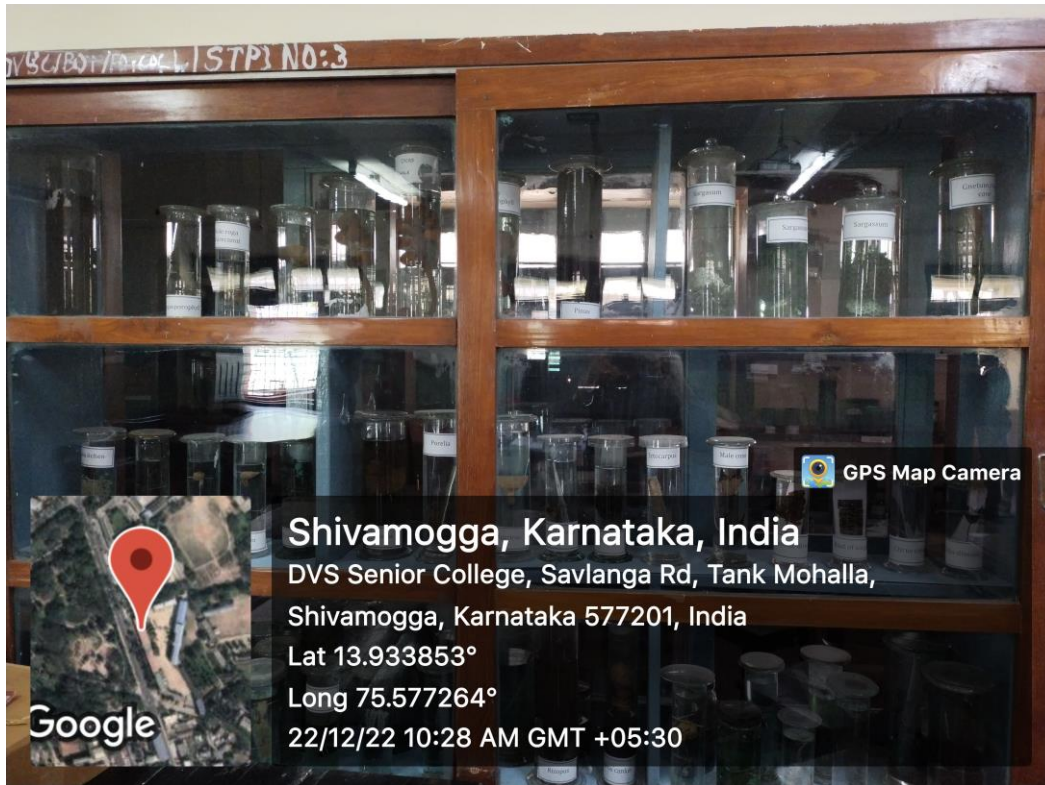


  
Principal  
D.V.S. College of Arts & Science  
Shimoga.

**List of Specimen maintained at Botany Museum**

Nostoc	Xylaria	Agaricus
Spirulina	Vanda	Pinus female cone
Chlorella	Opuntia	Rhizopus
Oedogonium	Tikka disease	Cactus
Vaucheria	Rust of Sargassum	Vitis Quadiangularis
Baterchospermum	Mushroom	Echinopus Echinatus
Puccinia	Megasporophyll	Cycas Megasporophyll
Spirogyra	Sellaginella	Garlic
Bryophyllum	Bulbophyllum	Pezzia
Peziza	Vivipary	Riccia
Ectocarpus	Hesperidium	Codium
Powdery mildew	Kolae Roga of Arecanut	Bryophyllum
Polycarpus	Marchantia	Sea weed
Guava	Puff ball	Isoetis
Citrus Canker	Ectocarpus	Bryophyllum
Vivipary	Usnea- lichens	Smilax
Rhizome	Marchantia	Gnetum male cone
Caulerpa	Nostoc balls	Pezzia
Ophiglossum	Oedogonium	Gloriosa Superba
Pneumatophore	Microsporophyll	Bulbophyllum
Asparagus	Oedogonium	Orchid
Aloe vera	Caulerpa	Porella
Eicchornia	Megasporophyll	Cycas Corrolloid root
Cuscuta	Cactus	Vivipary
Simple spadix	Spirogyra	Loculicidal capsule

# Botany Museum



*M. V. ...*  
Principal  
D.V.S. College of Arts & Science  
Shimoga.

**List of Specimen maintained at Zoology Museum**

Phylum Urochodata	Herdmania
Phylum Cephalochordata	Amphioxus
Phylum Hemichordata	Balanogloussus
Class Cyclostomata	Petromyzon, Myxine

**Class Pisces**

Saccobranchus	Flying Fish	Narcine (3)	Exocoetus	Hippocampus
Shark embryo with yolk	Ophiocephalus(2)	Sardine	Clarias	Syngnathus
Rohu	Cat fish	Flat fish	Catla	Murrel
Anabus	Echenis	Mackerel	Synaptura	Puffer fish
Sting Ray	Shark	Eel fish	Hammer fish	Saw fish

**Class Amphibia**

Mud skipper	Icthyophis(2)	Life cycle of frog	Salamander	Rhacophorus(2)
Tadpole of frog	Necturus	Ambystoma	Bufo	

**Class Reptilia**

Green snake	Natrix	Turtle	Typhlops	Eryx Johni
Naja naja	Varanus	Phrynosoma	Mabuya	Calotes
Crocodile	Draco	Phython	Krait	Hydrophis
Chameleon	Rat snake			

**Class Mammalia**

Squirrel	Bat
----------	-----

**Phylum Porifera**

Spongilla	Hylonema	Sycon
-----------	----------	-------

**Phylum Coelenterata**

Pennatula	Aurelia	Sea anemone	Gorgonia	Fungia
Metridium	Porpita	Physalia		

### Phylum Helminthes

Planaria	Fasciola hepatica	Tape worm	Ascaris
----------	-------------------	-----------	---------

### Phylum Annelida

Sabella	Grantia	Pheretima	Leech	Aphrodite
Neries	Heteroneries			

### Phylum Artropoda

Scorpion	Peneaus	Life cycle of cockroach	Stick insect	Mantis
Beetle	Eupagurus	Centipede	Butterfly	moth
Lepisma	Gryllotalpa	Spider	wasp	Crab
Disease pebrine	Silkworm larva	Silk worm cocoon	Scolopendra	Honey bees
Limulus	peripatus	tortoise		

### Phylum Mollusca

Octopus	Unio	Xancus	Loligo	Mytilus
Pecten	Murix	Chiton	Aphyllia	Sepia
Cuttle bone	Ariopanta	Balanus	Cypraea	Pearl oyester

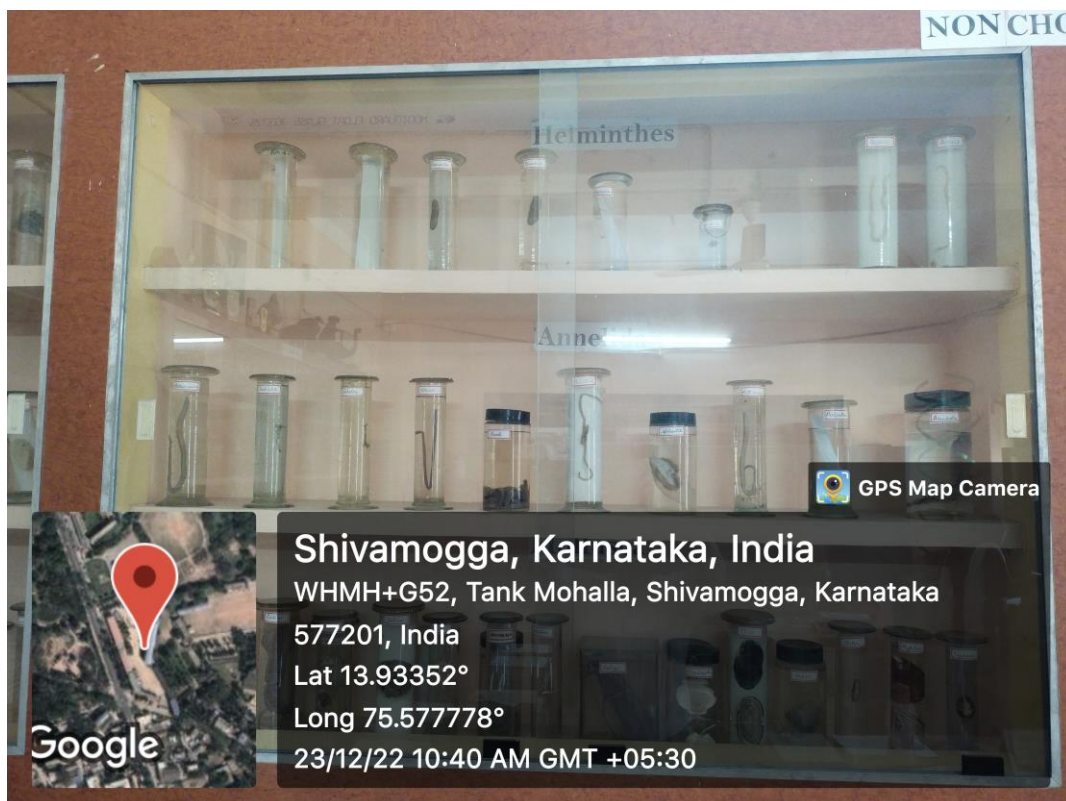
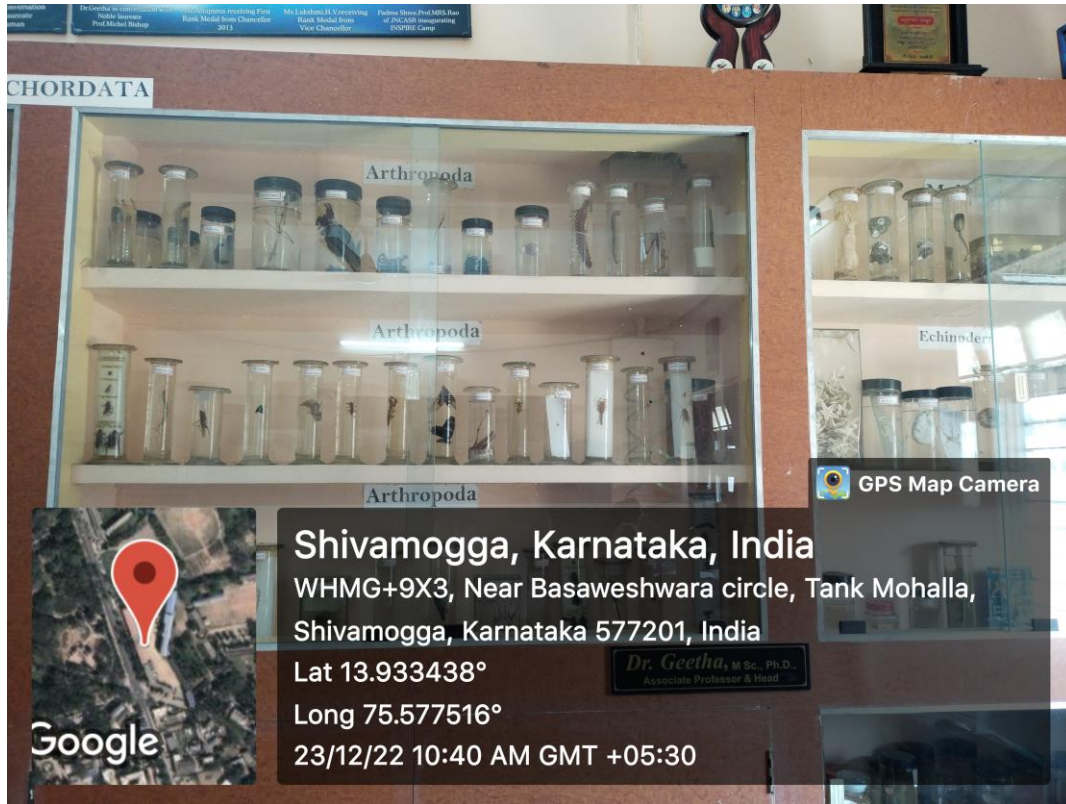
### Phylum Echinodermata

Ophiothix	Echinus	Antedon	Holothuria	Star fish
-----------	---------	---------	------------	-----------

Human kidney, Heart of a sheep, Bird gizzard, Rat digestive system, Rat urinogenital system, Human vermiform appendix, Wisdom teeth, Rat skull.

  
Principal  
D.V.S. College of Arts & Science  
Shimoga.

# Zoology Museum



  
Principal  
D.V.S. College of Arts & Science  
Shimoga.