



DESHIYA VIDHYASHALA SAMITHI ®,

**D.V.S COLLEGE OF ARTS, SCIENCE AND COMMERCE,
SHIVAMOGGA**

DEPARTMENT OF ENGLISH

**CLASS – THIRD YEAR OPTIONAL ENGLISH
PAPER – 5
TOPIC – TWENTIETH CENTURY LITERATURE**

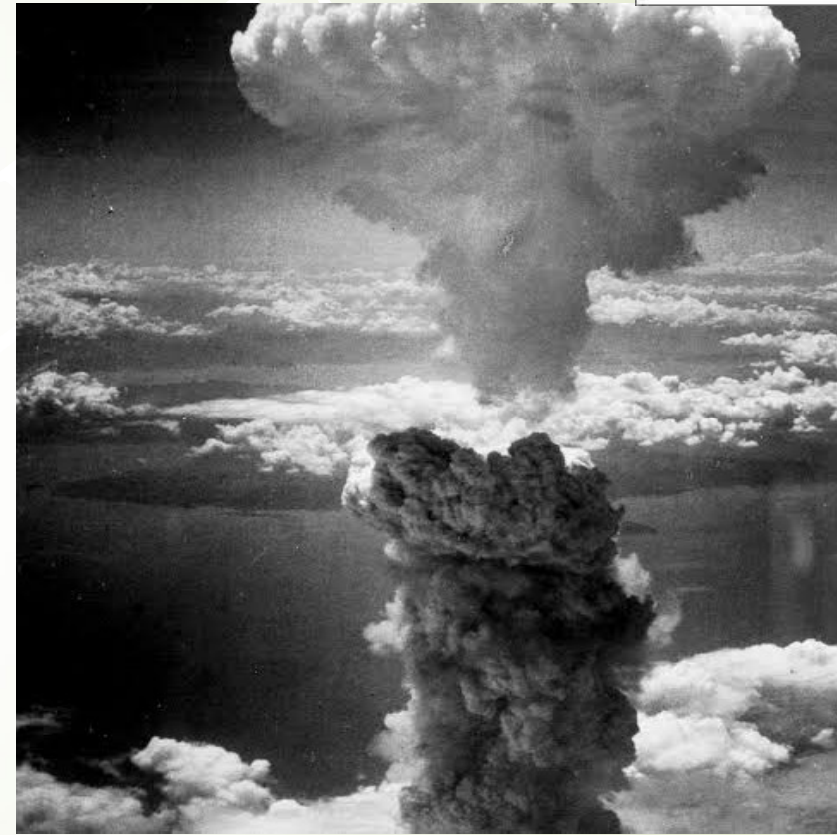
DVSS COLLEGE

Images of First World War



D

Images of Nuclear Bomb effects





Images of Great Depression 1930's



Origin and definition

- ▶ A term used to describe new styles in art and literature.
- ▶ Influenced by French Symbolist movement.
- ▶ French poets Charles Baudelaire and Stephen Mallarme began writing in a new style.
- ▶ Science and technology – motor car, aeroplane, wireless, television brought world together
- ▶ The second world war had split the world into two blocks.
- ▶ America became the world power replacing England.
- ▶ Younger generation revolted against Victorian ideals
- ▶ Sense of loss, disenchantment, frustration.
- ▶ Literature was commercialised.

- ▶ D.V.S. College of Arts Science & Commerce, Shivamogga
- ▶ Department of English



Features of Modernism

- ▶ New and different
 - ▶ Ezra Pound's rallying cry – “ make it new”
 - ▶ Avant – garde term used to describe innovations in art.
 - ▶ Motto of Modernists – ‘Out with the old,in with the new.’
 - ▶ Imagism, use of images perceived by senses to communicate an idea.
 - ▶ Realism and Naturalism
 - ▶ Psychological insights of Sigmund Freud and Carl Jung
 - ▶ Stream of consciousness technique
-
- ▶ D.V.S. College of Arts Science & Commerce, Shivamogga
 - ▶ Department of English



Features of Modernism

- Impact of two world wars – devastation, violence and bloodshed.
- Modernity had positive and negative impacts
- It is often associated with new, advanced, scientific and better.
- Harlem Renaissance of 1920's – upsurge of literature and art by African Americans
- Emphasized subjective experience .
- Growing alienation and scepticism
- Associated with misuse of technologies and massive death during first world war.
- Non – chronological and fragmentary composition.
- Use of irony, parody, myths and open ended stories.

- D.V.S. College of Arts Science and Commerce, Shivamogga
- Department of English



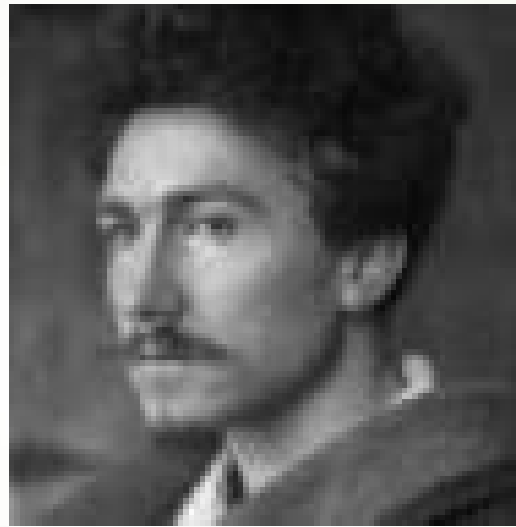
Features

- Focused on inner life, psychology, mind and subjective experience of characters.
- Preoccupied with a new, distinctly pessimistic worldview.
- Due to chaotic contemporary world post war period in Europe and America.
- Experimental styles.
- Innovative uses of traditional literary techniques

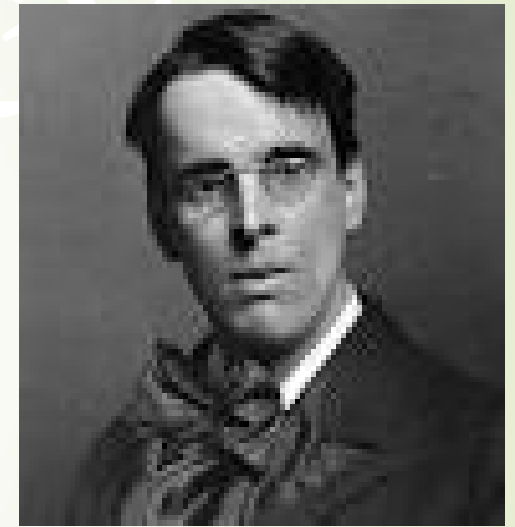
- D.V.S. College of Arts Science and Commerce, Shivamogga
- Department of English



T. S. Eliot



Ezra Pound

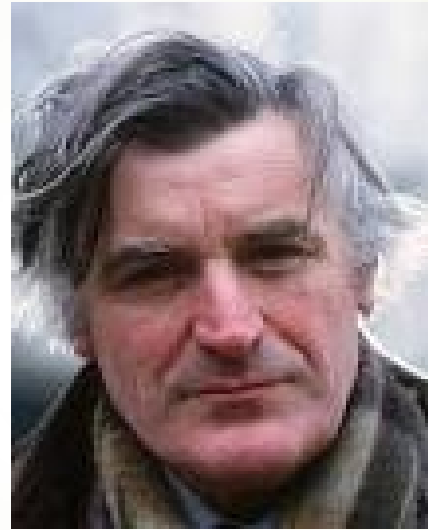


W. B. Yeats

- D.V.S. College of Arts Science and Commerce, Shivamogga
- Department of English



W. H. Auden



Ted Hughes



Robert Frost

- D.V.S. College of Arts Science & Commerce, Shivamogga
- Department of English



➤ **D.H. Lawrence**



Maya Angelou

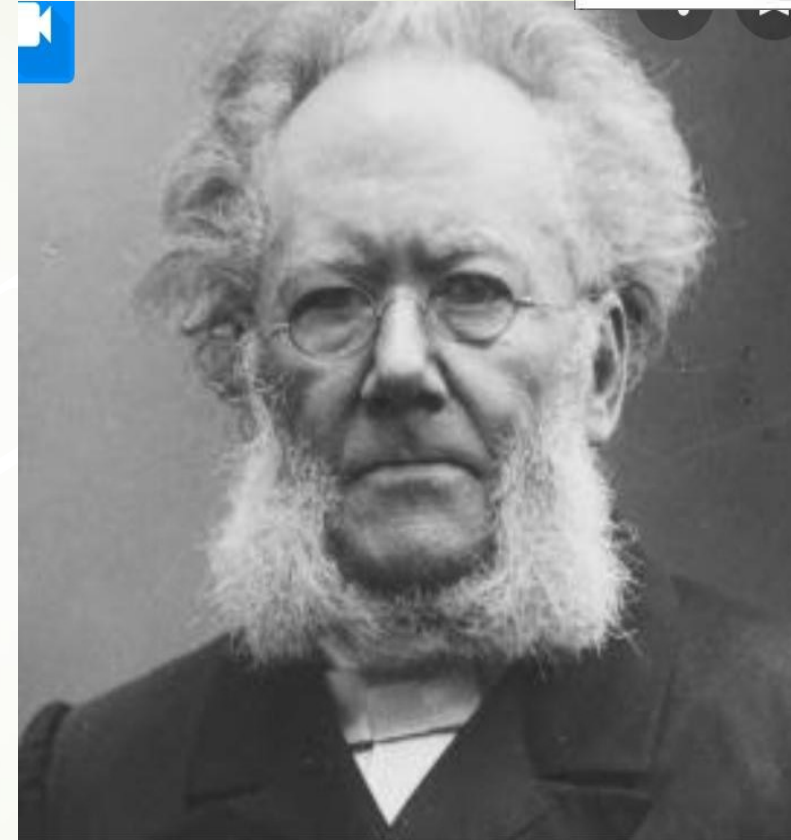


Sylvia Plath

- D.V.S. College of Arts Science & Commerce, Shivamogga
- Department of English



George Orwell



Henrik Ibsen

- D.V.S. College of Arts Science and Commerce, Shivamogga
- Department of English

Thank You

DVSS COLLEGE

